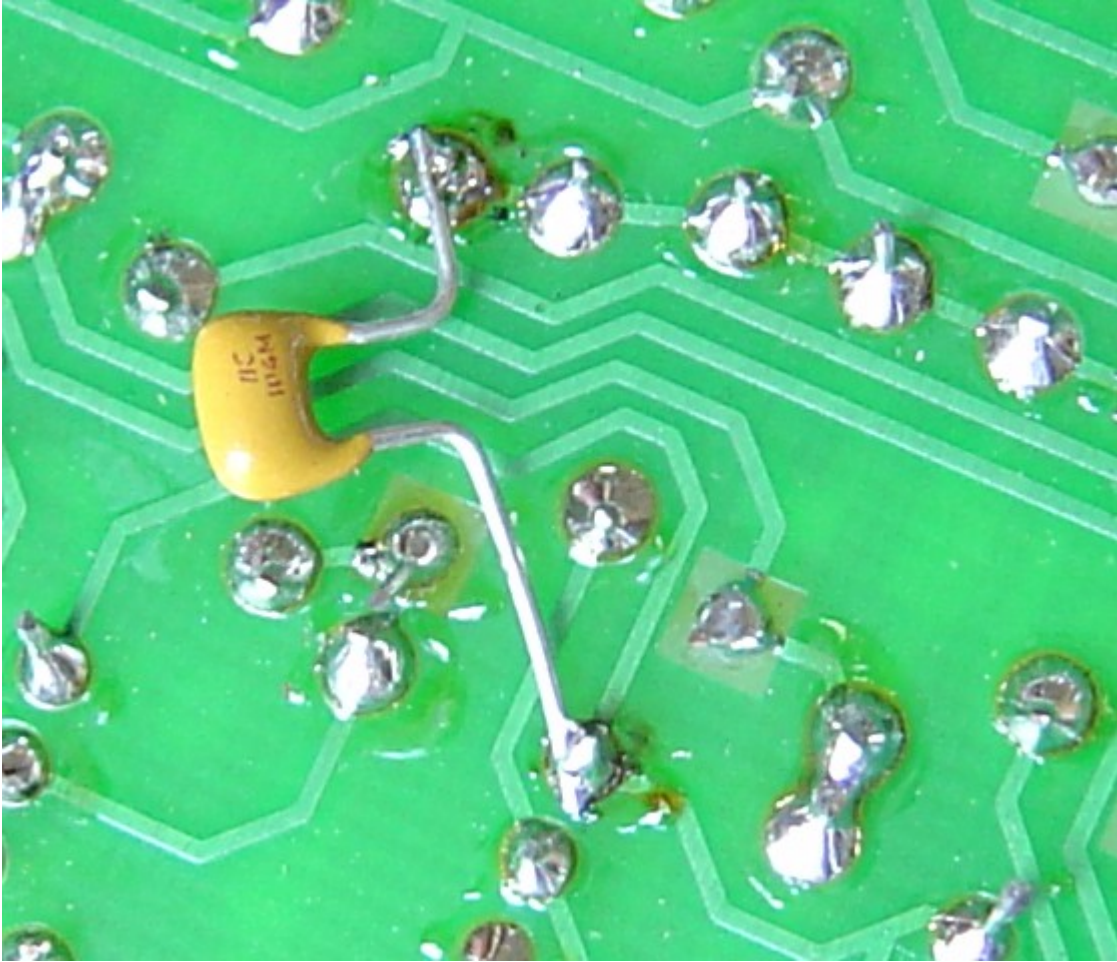


Adding a Capacitor to Increase the Filtering of the V+ at the Volume CV Circuit Section



Use a 0.1uF and trim and form its leads to fit on the bottom of the board from the Q6-collector solder joint (transistor pin-out is emitter-base-collector left to right viewing the flat face, legs down) to a nearby ground solder joint: There's a string of ground joints for nearby parts R27, D14, C25, D13, etc...